



1. Be careful while removing the Filter.
2. **Cleaning:**  
Clean Appliance by using a damp cloth for wiping.  
(i) Drying of the powder will clog the Filter.  
(ii) When cleaning the Filter use a mild detergent with sponge.
3. **Descaling:**  
a. Hard water and impurities will clog the Pipe. Therefore, dissolve 2 tablespoons of Vinegar in 500 ml of water and pour into Water Tank.  
b. Allow water to filter through the Coffee Maker twice or thrice.  
c. Finally run through fresh water twice, to remove all traces of Vinegar.  
d. **Descale once in a month without fail.**



1. **Do not forget to switch "OFF" the Coffee Maker, when Pilot Lamp in the Switch goes "OFF" if you want to have Coffee immediately after brewing.**
2. Do not touch any of the hot parts of the Coffee Maker.
3. Never immerse the Coffee Maker in water or pour water on the Coffee Maker.
4. **Do not replenish the water in the Jar while Coffee Maker is "ON".**
5. **Do not fill water in the Water Tank to more than the maximum level, i.e. 500 ml. (while brewing Coffee).**
6. **Do not pour anything other than water into the Water Tank.**
7. If milk, brewed coffee, milk powder, etc, is put inside the Water Tank, it will choke the pipe and cause the Coffee Maker to breakdown.
8. Do not press or beat Filter Mesh to avoid tearing of the Mesh.
9. Do not tamper or attempt to repair the Coffee Maker.  
In the event of the unit needing attention, take it to one of Preethi Customer Care Centres.
10. Do not use Coffee Maker for more than 1 hour in keep warm mode.
11. Do not use Coffee Maker when water tank & Jar are empty.

### Customer Care Centre

#### TAMIL NADU

1. **Avadi**- Ph:044-26555387.  
cccavadi@preethi.in
2. **Kellys**- Ph:044-26420318.  
ccckellys@preethi.in
3. **Porur**- Ph:044-24761797.  
cccpurur@preethi.in
4. **T.Nagar**- Ph:044-24347418,  
ccctnagar@preethi.in
5. **Tambaram**- Ph:044-22261510.  
ccctambaram@preethi.in
6. **Adayar**- Ph:044-24462099.  
cccadayar@preethi.in
7. **Chidambaram**- Ph:04144-223256.  
cccchidambaram@preethi.in
8. **Coimbatore**- Ph:0422-2232687.  
ccccoimbatore@preethi.in
9. **Coimbatore**- Ph:0422-2540687.  
cccocoimbatore2@preethi.in
10. **Coonoor**- Ph:0423-2236878.  
cccconoos@preethi.in
11. **Dharmapuri**- Ph: 04342-263233.  
cccddharmapuri@preethi.in
12. **Dindigul**- Ph:0451-2423060.  
cccddindigul@preethi.in
13. **Erode**- Ph:0424-2221200.  
ccceroode@preethi.in
14. **Gobichettypalayam**-  
Ph:04285-228889.  
cccgobi@preethi.in
15. **Hosur**- Ph:04344-243434  
cccchosur@preethi.in
16. **Kancheepuram**- Ph:044-27230492.  
ccckancheepuram@preethi.in
17. **Karikal**- Ph:04368-225818.  
cccckarikal@preethi.in
18. **Karaikudi**- Ph:04565-236376.  
cccckarikudi@preethi.in
19. **Karur**- Ph:04324-241989.  
cccckarur@preethi.in
20. **Kumbakonam**- Ph:0435-2425142.  
cccckumabakonam@preethi.in
21. **Madurai**- Ph:0452-2347386.  
cccmadurai@preethi.in
22. **Mayavaram**- Ph:04364-241202.  
cccmayavaram@preethi.in
23. **Nagercoil**- Ph:04652-244505.  
cccnagarcoil@preethi.in
24. **Namakkal**- Ph:04286-222592.  
cccnamakkal@preethi.in
25. **Puducherry**- Ph:0413-2229599.  
cccuducherry@preethi.in
26. **Pudukottai**- Ph:04322-224195.  
cccududukottai@preethi.in
27. **Ramanathapuram**- Ph:04567-222344.  
cccramnad@preethi.in
28. **Salem**- Ph: 0427-2250578.  
cccsalem@preethi.in
29. **Tanjore**- Ph:04362-273565.  
cccctanjore@preethi.in
30. **Theni**- Ph: 04546-253603.  
ccctheni@preethi.in
31. **Tirunelveli**- Ph:0462-2321824.  
cccctirunelveli@preethi.in
32. **Tiruppur**- Ph:0421-4240234.  
cccctiruppur@preethi.in
33. **Tiruvannamalai**- Ph:04175-254900.  
cccvmalai@preethi.in
34. **Tiruvavur**- Ph:04366-220766.  
cccctiruvavur@preethi.in
35. **Trichy**- Ph:0431-2751288.  
cccctrichy@preethi.in
36. **Trichy**- Ph:0431-2415181.  
cccctrichyont@preethi.in
37. **Tuticorin**- Ph:0461-2331668.  
cccctuticorin@preethi.in

### Customer Care Centre

38. **Udumalpet**- Ph:04252-221477.  
cccudumalpet@preethi.in
39. **Vellore**- Ph:0416-2215916.  
cccvellore@preethi.in
40. **Villupuram**- Ph:04146-227008.  
cccwillupuram@preethi.in
41. **Virudhunagar**- Ph:04562-420624.  
cccvirudhunagar@preethi.in
42. **Bengaluru**- Ph:080-25452466  
ccchenur@preethi.in
43. **Bangalore 1**- Ph:080-22222583,  
22130362. ccjnblr@preethi.in
44. **Bangalore 2**- Ph:080-23324161.  
cccmblr@preethi.in
45. **Belgaum**- Ph: 0831-2464093.  
cccbelgaum@preethi.in
46. **Bellary**- Ph:0839-2277139.  
cccbellary@preethi.in
47. **Goa**- Ph:0832 -2445085.  
ccgoa@preethi.in
48. **Hubli**- Ph:0836-2352077.  
cccubli@preethi.in
49. **Mangalore**- Ph: 0824-2410434.  
cccmanalore@preethi.in
50. **Mysore**- Ph:0821-2443966.  
cccmysore@preethi.in
51. **Shimoga**- Ph: 08182-403578.  
cccshimoga@preethi.in

#### ANDHRA PRADESH

52. **Eluru**- Ph:08812-221841.  
ccccluru@preethi.in
53. **Guntur**- Ph:0863-2214551.  
cccguntur@preethi.in
54. **Kukatpalli**- Ph:040-23063848.  
cccukatkpalli@preethi.in
55. **Hyderabad**- Ph:040-27661588.  
cccchderabad@preethi.in
56. **Saroor nagar**- Ph:040-24044858.  
cccchydsm@preethi.in
57. **Kadappa**- Ph:08562-246552.  
cccckadapa@preethi.in
58. **Karim Nagar**- Ph:0878-2245211.  
cccckarimnagar@preethi.in
59. **Khammam**- Ph:08742-228970.  
cccckhammam@preethi.in
60. **Kurnool**- Ph:08374000985.  
cccckurnool@preethi.in
61. **Mancherial**- Ph:08736-254222.  
cccmanchireal@preethi.in
62. **Nellore**- Ph:0861-2321998.  
cccnellore@preethi.in
63. **Nizamabad**- Ph:08462-229526.  
cccizamabad@preethi.in
64. **Ongole**- Ph:08592-284914.  
ccccongole@preethi.in
65. **Rajahmundry**- Ph:0883-2441321.  
cccrajamundry@preethi.in
66. **Secunderabad**- Ph:040-27819516.  
cccsecunderabad@preethi.in
67. **Srikakulam**- Ph:08942-222448.  
cccstrikakulam@preethi.in
68. **Tirupathi**- Ph:0877-2258966.  
cccctirupathi@preethi.in
69. **Vijayawada**- Ph:0866-2431158.  
cccviayawada@preethi.in
70. **Vizag**- Ph:0891-2541915.  
cccvizag@preethi.in
71. **Vizianagaram**- Ph:08922-226629.  
cccvizianagaram@preethi.in
72. **Warangal**- Ph:09000101820.  
cccwarangal@preethi.in
73. **Alapuzha**- Ph:0477-2230896.  
cccalapuzha@preethi.in
74. **Attingal**- Ph: 0470-2620165.  
cccattungal@preethi.in
75. **Balarampuram**- Ph: 0471-2408461.  
cccbalaramapuram@preethi.in
76. **Calicut**- Ph:0495-2724080.  
ccclicut@preethi.in
77. **Chenganacherry**- Ph:0481-2424383.  
cccchanga@preethi.in
78. **Cochin**- Ph:0484-2370781.  
cccernakulam@preethi.in
79. **Kanhangad**- Ph:0467-2200799.  
cccckanhangad@preethi.in
80. **Kannur**- Ph:0497-2765948.  
cccckannur@preethi.in
81. **Kollam**- Ph:0474-2708800.  
cccckollam@preethi.in
82. **Kottayam**- Ph:0481-2584793.  
cccckottayam@preethi.in
83. **Malappuram**- Ph:0494-2429955.  
cccmlappuram@preethi.in
84. **Palakkad**- Ph:0491-2536106.  
cccplakkad@preethi.in
85. **Pathanamthitta**- Ph:0468-2325605.  
cccpathanamthitta@preethi.in
86. **Perambavoor**- Ph:09207728100.  
cccperumbavoor@preethi.in
87. **Thalassery**- Ph:0490-2341761.  
ccccthalassery@preethi.in
88. **Thodupuzha**- Ph:0486-2220292.  
ccccthodupuzha@preethi.in
89. **Thrissur**- Ph:0487-2380919.  
ccccthrissur@preethi.in
90. **Tripunnithra**- Ph:0484-2778728.  
cccctripunnithra@preethi.in
91. **Trivandrum**- Ph:0471-2341216.  
cccctrivandrum@preethi.in

#### MAHARASTRA

92. **Mumbai**- Ph:09940000005  
cccmbai@preethi.in
93. **Pune**- Ph:09940000005.  
cccnpune@preethi.in
94. **Nagpur**- Ph:09940000005  
cccagnapur@preethi.in
95. **Kolapur**- Ph:09940000005  
cccckolapur@preethi.in
96. **Nashik**- Ph:09940000005  
cccnnashik@preethi.in
97. **Bhubaneshwar**- Ph: 09940000005  
cccbbhubaneshwar@preethi.in
98. **Ahmadabad**- Ph: 09940000005  
cccchahmadabad@preethi.in

#### ODISHA

97. **Bhubaneshwar**- Ph: 09940000005  
cccbbhubaneshwar@preethi.in

#### GUJARAT

98. **Ahmadabad**- Ph: 09940000005  
cccchahmadabad@preethi.in

<b>Customer Support</b>	<b>One number for all your queries</b>	<b>One address for all your communication</b>	<b>Philips Domestic Appliances India Ltd.</b> Futura Tech Park, Q4, 4th Floor, Block-B, #334, Rajiv Gandhi Salai, (OMR), Sholinganallur, Chennai-600119. INDIA. Ph: +91-44-24501042, +91-44-24501044. Email: info@preethi.in   Web: www.preethi.in
	99400 00005	care@preethi.in	
<b>Social Media</b>	Like Us:	www.facebook.com/PreethiKitchenAppliances	
	Follow Us:	www.twitter.com/PreethiIndia	
	Subscribe Us:	www.youtube.com/user/PreethiIndia	

# Preethi®

## Filter Coffee Maker

### Microfine Permanent Filter



café zest



Dripcafe

1 YEAR PRODUCT GUARANTEE

LIFELONG FREE SERVICE

All images displayed in product package / DfU are indicative only

## INSTRUCTION MANUAL

### Technical Specifications:

Model & Model No.	Drip Café - CM 208	Café Zest - CM 210
Quantity of Coffee produced with max. quantity	460.00 ml (max.)	450.00 ml (max.)
Quantity of Coffee produced with min. quantity	280.00 ml (max.)	250.00 ml (max.)
Product dimensions min.	245(L) x 165(B) x 270(H) mm	260(L) x 165(B) x 270(H)mm
Lid	Polycarbonate	Polypropylene Co-Polymer
Gross Weight	1.500 kg. (max.)	
Voltage	230 V ~ 50 Hz	
Power Consumption	450 Watt	
Material of Body	Polypropylene Co-Polymer	
Material of Filter Body	Polypropylene Co-Polymer	
Material of Filter	Polyester Mono Filament Bolting Cloth	
Jar Capacity	500 ml (Stainless Steel Jar)	
Power Chord	6 Amps, 2.15 Metres Length (approx.)	
Time to prepare max. quantity of coffee	5-8 minute	
Time to prepare min. quantity of coffee	3-5 minute	
Temperature of Supporting surface	38° C ± 10 %	
Thermal Efficiency	70 % ± 5 %	
Safety Devices	Thermostat, Overload Protector	

In pursuance of our policy of continuous product improvement, specifications are subject to change without notice.

# Wake up to a cup of piping hot aromatic coffee.

Preethi Coffee Maker saves your time and trouble, eliminating elaborate rituals involved in making Filter Coffee in the traditional way.

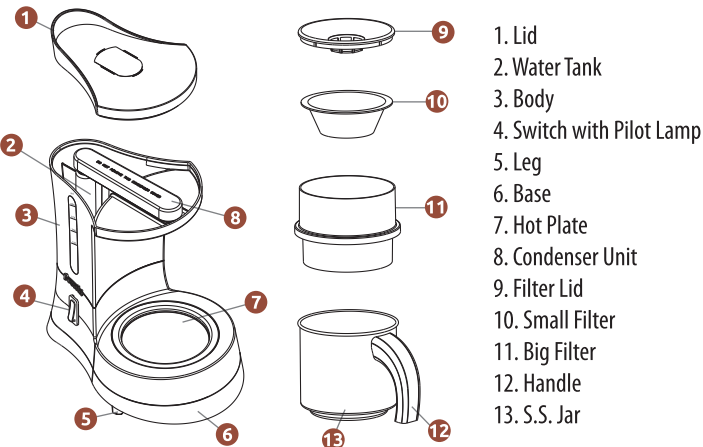
Now all you need to do is switch "ON" the Coffee Maker for decoction within minutes. The unique Preethi Coffee Maker system enhances flavour and ensures consistently full flavoured aromatic coffee.

For long years of trouble free service, kindly read and follow the operating instructions carefully.

## EXPLODED VIEW OF DRIP CAFÉ



## EXPLODED VIEW OF CAFÉ ZEST



## BEFORE FIRST USE

1. Wash the Jar, Filter and Filter Lid in warm water. Rinse and dry.
2. Pour water up to 100 ml Level in Water Tank and switch "ON" (without using Coffee Powder) to clean Pipe.

## INSTRUCTIONS FOR MAKING COFFEE

- Open the Lid of Water Tank and pour the required quantity of water.
- 125 ml. indicates two small cups of coffee, 250 ml. indicates four small cups of coffee and so on.
- Put coffee powder into Filter.
- For medium strong coffee, you require 1 spoon app. 5 grams) per small cup of coffee.
- The amount of coffee powder required depends in the number of cups and strength of coffee you require.
- Spread roasted and ground coffee powder evenly onto Filter and replace Filter Lid.
- Use Small Filter(with Big Filter) for making 1 or 2 cups of coffee. For larger quantities use the Big filter only.
- Place Filter and Filter Lid on Jar & Place Jar on Hot Plate.
- Press Switch to "On".
- In about sixty seconds, hot water start dripping onto the coffee powder evenly.
- The brewed coffee is collected in the Jar.
- When coffee is collected in the Jar the café zest will go automatically to **keep warm** mode & pilot lamp in the switch goes off.
- When the Pilot Lamp in the switch Goes off, press the Switch to "OFF" position if you want to have coffee immediately.
- Pour Coffee into Coffee Cup.
- Mix the decoction with required quantity of hot milk or whitener and sugar.3

**Keep Warm Function:** The coffee can also be kept in keep warm mode up to 1 hour if you do not wish to consume immediately. Coffee maker should be switched off with in 1hour, after 1hour aroma will not be retained.

**! CAUTION**  
COFFEE MAKER SHOULD BE SWITCHED OFF WITH IN 1 HOUR KEEP WARM  
NEVER OPERATE WITHOUT PROPER EARTHING.



## TIPS ON MAKING COFFEE

- Ensure that seeds are freshly roasted and grind the seeds to powder in small quantities, for day to day use. **Do not grind to a fine powder.**
- Do not reheat decoction.
- Use freshly boiled milk.
- The time cycle for brewing depends on the following factors:
  - Quantity and Temperature of water used.
  - Room Temperature.

## INSTRUCTIONS FOR MAKING HOT WATER

1. Fill required water in Water Tank.
2. Place the Filter Cup and Filter Lid on the Jar and place the Jar on the Hot Plate to prevent spillage of hot water.
3. Follow the instructions given for making coffee.

## GUARANTEE CARD - CM 208 & CM 210

Date Sold: \_\_\_\_\_

Sl. No.: \_\_\_\_\_

Model: \_\_\_\_\_

Purchaser's Name & Address: \_\_\_\_\_

Dealer's Name & Address: \_\_\_\_\_

Signature: \_\_\_\_\_ Stamp: \_\_\_\_\_

## TERMS AND CONDITIONS OF GUARANTEE AND SERVICE POLICY

1. Retain the original sale bill and the Guarantee Card, which should be shown to our Service Personnel for Scrutiny while sending your Coffee Maker for service to our Customer Care Centre.
2. The **One Year Guarantee** does not cover damage to the Appliance due to mishandling, negligence, breakage or cracking of Plastic Parts including the Clear Lid and denting of Stainless Steel Jar.
3. **All repairs within the One year guarantee period (arising from manufacturing defects) will be done 'Free of Charge'. Our Customer Care Centres will not charge you for Components or labour.**
4. **Free service and replacement under guarantee does not affect the expiry date of the guarantee.**
5. For repairs after the expiry of the guarantee period our Customer Care Centre will levy a nominal charge on components replaced. There is no labour charge and service is free.
6. **The Guarantee is valid only in the country of Purchase.**
7. **Defective components which are exchanged both under 'Chargeable' and 'Free of Charge' basis, become the property of the Company.**
8. All our Customer Care Centres display a list of showing the MAXIMUM RETAIL PRICE of all Coffee Maker Spares.
9. **You are entitled to a free check up every 6 months with any of our Customer care Centres listed in Page 7 of this Manual.**
10. **If the Coffee Maker is tampered with or opened by any unauthorised person, the Guarantee is void.**
11. **Guarantee is void if the Coffee Maker is used for any purpose other than domestic use.**