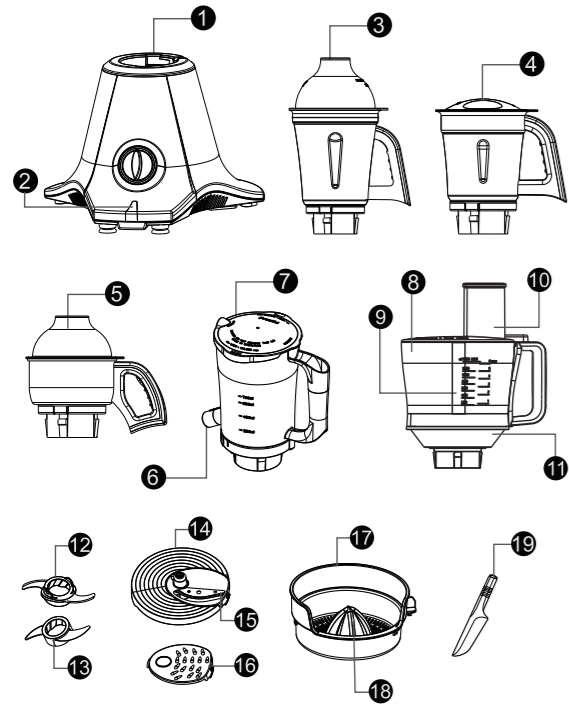




## How to use your Preethi Zodiac Black

PREETHI is provided with PVC insulated flexicord with plugtop, Plug the Power Cord to a 230 V ~ 50 Hz supply only. If the supply cord is damaged, it must be replaced by the manufacturer or its authorised service agent only in order to avoid a hazard.

### Know your Preethi Zodiac Black



1. Base unit with 750 W motor
2. OLP indicator
3. 1.5 Litre Wet grinding Jar with removable Blade
4. 1.0 Litre Dry grinding Jar with removable Blade
5. 0.5 Litre Chutney Jar with fixed blade
6. Spout
7. Super Extractor Jar
8. Master chef Jar with Lid
9. Blade Coupler
10. Pusher/ Measuring Cup
11. Gear Box
12. Chopper Blade
13. Kneader Blade
14. Blade holder Disk
15. Slicing Blade
16. Grating Blade
17. Citrus Bowl
18. Citrus Cone
19. Spatula

**"Once the appliance is switched on; the power LED around the switch knob and the Overload indicator will glow in blue color"**

#### Note:

- Jar Placing** : Place the Jar on the Top Cap, Ensuring that the locks fit properly in the Jar locking Grooves of the Top Cap.
- Dome** : Ensure that the Dome Gasket is properly fitted and hold Dome gently while operating
- Speed Control** : Turn Rotary Switch clockwise for speed 1,2 or 3 as desired. Inching-Turn Rotary Switch anti-clockwise for a few seconds and release or momentary operation. (*Inching is especially useful for wet grinding of chutneys, crushing ice, etc.,*)

Jar Capacity					
Sl.No.	Jar Capacity	Recipe	Quantity	Speed	Time
1.	Big Jar (1.50 Litre)	Urad Dal	200g + 450ml water soaked for 6-8hrs. Add 50ml water	P,1,2,3	5.0 min
		Rice	250g + 282ml water soaked for 6-8hrs. Add 50ml water	P,1,2,3	5.0 min
2.	Medium Jar (1.00 Litre)	Garam Masala	150g of assorted spices roasted and cooled	P,1,2,3	2.0 min
		Wet Masala	150g onion + 100g tomato	P,1,2,3	2.0 min
3.	Small Jar (0.50 Litre)	Ginger garlic paste	50g ginger + 50g garlic	P,1,2,3	1.5 min
4.	Appliance not suitable for Whisking Egg Whites				
	<b>Jar</b>	<b>Capacity</b>	<b>Rated Capacity</b>		
	Super Extractor Jar	1.2 Litre	0.5 Litre (Wet Max.)		
	<b>Master Chef Jar</b>	<b>2.1 Litre</b>	<b>Grams</b>		
	Chopping		<b>300 grams</b>		
	Slicing		<b>500 grams</b>		
	Grating		<b>500 grams</b>		
	Kneading		<b>300 grams</b>		
	Citrus Press		<b>750 grams</b>		

\*Minimum capacity for all the above jars is at-least up to the blade level.

## Grinding Instructions:

### ROASTED CEREALS, RAW RICE, DAL, CHILLI POWDER, GARAM MASALA, DHANIYA JEERA POWDER, CURRY LEAF POWDER, COFFEE POWDER, SAMBAR / RASAM POWDER....

- Ensure Blade, Jar, Lid and ingredients are totally dry.
- Run on Speed 1,2 & 3.
- If you need finer powder, wait for 1 minute and grind again for 1 to 2 minutes.

### IDLI, DOSA, UTHAPPAM, APPAM, PESARATTU, VADAI...

- Soak Rice/Dal for 4 to 5 hours or as required.
- Drain water from ingredients.
- Run on Speed 1,2 & 3 adding water gradually when required.
- If Material sticks to the sides of the Jar, stop and stir using Stirrer, run again.
- Ensure free circulation by adding enough water.
- Do not allow batter to get heated up.
- Do not add too much water, where thick paste is required.
- Grind twice if quantity is more.

**Note:** While wet grinding tough batter, air bubbles may enter the paste. This will result in the blade rotating freely and an increase in noise. If so, stop, stir the paste and restart.

### COCONUT, TOMATO, ONION, CORIANDER, MINT CHUTNEY

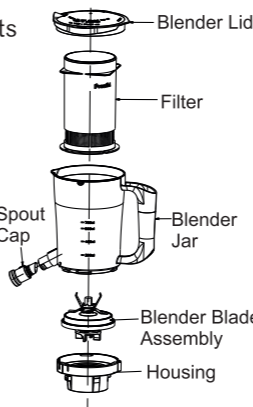
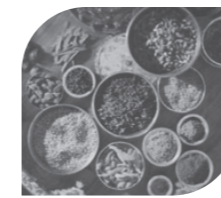
- Inch 5 to 7 times to powder ingredients then add water as required & grind on Speed 1,2 & 3.

## HOW TO USE SUPER EXTRACTOR JAR

### How to assemble jar for Blending/ Extraction

- Place the blender blade assembly inside the jar housing. Now place the jar on the housing such that the unlock position is aligned and rotate clockwise to lock in place as shown in figure
- Place the spout cap in position and rotate to lock such that its projection is in line with the projection on jar for extraction.
- Align the filter against the slots and place inside the jar and close the blender lid.
- Lock the jar on base unit.
- Put ingredients into filter.
- Switch on the appliance. Pulse 7 to 10 times till ingredients are shredded.
- Open lid, add required amount if water. (Do not exceed the max. indicated level).
- Close lid and run on Speed 1. Second extraction is possible for coconut milk (For tamarind extract, remove seeds before extraction.)
- Remove jar assembly from the mixer and tilt the jar to pour.

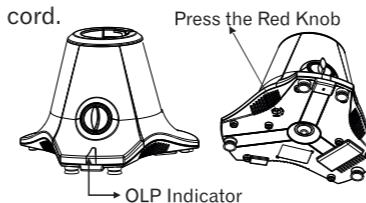
**Note :** While using the blender jar with filter for blending/extraction place the spout cap in the projection and rotate until locked before blending



## OVERLOAD PROTECTOR

**If the mixie is overloaded and the appliance stop during operation then the OLP indicator changes colour from 'Blue' to 'Red'**

1. First switch OFF the Mixie & unplug the power cord.
2. Remove some material which is being ground from the Jar decrease the load.
3. Wait for 3 - 5 minutes.
4. Lift the Unit and press the RED KNOB projecting out of Bottom plate.
5. Re-start the Mixie.



1. When operating the Grinder for the first time or after long storage or when the Mixie has been shifted over a long distance, rotate the Motor Shaft by hand through the Motor Coupler, until the Motor Shaft rotates freely.
2. Unplug from power socket before fixing, removing attachments and also while cleaning or when not in use.
3. **Ensure that the locks of the Stainless Steel Jar Housing are properly seated in the locking grooves provided inside the Top Cap and Dome is fixed properly on the Jar before starting the Mixie.**
4. **Ensure Blade is fitted properly before running.**
5. Do not place the appliances on an unstable surface.
6. Check if the voltage indicated on the base of the appliance, corresponds to the local electrical main voltage before connecting the appliance.
7. Always unplug the appliance after use.



1. Do not touch moving parts, while operating Mixie.
2. Do not overload Mixie. When hot air emanates from the opening on the Top Cap, switch off the Mixie and wait for 3-5 minutes, before re-starting.
3. Do not remove Dome and add solid ingredients, when the Motor is running.
4. Do not operate with damaged Power Cord.
5. Do not tamper or attempt to repair Grinder on your own, Contact nearest Preethi Customer Care Centre.
6. Do not grind hot ingredients in the Grinder.
7. Do not run the Grinder without Top Dome /Lid fixed on the Jar.
8. Do not place the Jar on Top cap of Base unit when the Switch is in "ON" Condition.
9. Never put your hand inside the Jar, without switching OFF the power supply.
10. Do not place the appliances on an unstable surface.
11. Do not move the appliances during operation.
12. This appliance should not be used 2000metres above the sea level.
13. Children should be supervised to ensure that they do not play with the appliance.
14. Cleaning and user maintenance shall not be used by children. Keep the appliance and its cord out of reach of children.
15. Do not use the appliance when the mains cord, the plug or other components are damaged. Only the company or service center authorized by Preethi must replace it.
16. Never touch food in the jar by hand. Always use a spatula.
17. Never leave the appliance running unattended.
18. Keep the appliance away from the source of heat like gas or electric stove.
19. Do not run the appliance with the jar empty.
20. Never load the jar with ingredients beyond the maximum level (See "Guide to Function" on same page for standard recipes details).
21. Do not use any attachment other than those provided or recommended by the manufacturer. It may cause hazards.

**Caution:** This appliance is not intended for use by persons (Including children) with reduced physical, sensory or mental capabilities, or lack of experience and knowledge, unless they have been given supervision or instruction concerning use of the appliance by a person responsible for their safety. Children should be supervised to ensure that they do not play with the appliance.